

D7205-CHA



5D 内冷直柄直槽钻 55XD Drills with straight flank and flutes and with Internal Cooling

TiAIN 涂层 AITIN-nano Coating

直线刃口, 平面后角 Linear cutting edge, flach relief

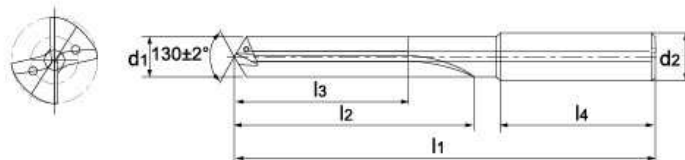
适用被加工材料: 铸铁等

Materials to be cut: Cast Iron and so on

P	M	K	N	S
Steels	Stainless Steels	Cast Iron	Non-ferrous metals	Superalloys
		12	23	
		○	●	

● 最适合 Best suitable
○ 适合 Suitable

工件材料表见P69 Workpiece Materials, see Page 69



型号 Type	刃径 Diameter d1(k6)	螺纹尺寸M公制 Thread Size Metric	柄径 Diameter of Holder d2(h6)	总长 Total Length l1	槽长 Length of flute l2	最大切深 Max. cutting depth l3	柄长 Length of shank l4
D7205-CHA-D0400	4.00		6.00	74	36	29	36
D7205-CHA-D0420	4.20	M5	6.00	74	36	29	36
D7205-CHA-D0500	5.00	M6	6.00	82	44	35	36
D7205-CHA-D0600	6.00		6.00	82	44	35	36
D7205-CHA-D0680	6.80	M8	8.00	91	53	43	36
D7205-CHA-D0700	7.00	M8X1	8.00	91	53	43	36
D7205-CHA-D0800	8.00		8.00	91	53	43	36
D7205-CHA-D0850	8.50	M10	10.00	103	61	49	40
D7205-CHA-D0900	9.00	M10X1	10.00	103	61	49	40
D7205-CHA-D1000	10.00		10.00	103	61	49	40
D7205-CHA-D1025	10.25	M12	12.00	118	71	56	45
D7205-CHA-D1100	11.00		12.00	118	71	56	45
D7205-CHA-D1200	12.00	M14	12.00	118	71	56	45
D7205-CHA-D1300	13.00		14.00	124	77	60	45
D7205-CHA-D1400	14.00	M16	14.00	124	77	60	45
D7205-CHA-D1500	15.00		16.00	133	83	63	48
D7205-CHA-D1550	15.50		16.00	133	83	63	48
D7205-CHA-D1600	16.00		16.00	133	83	63	48
D7205-CHA-D1700	17.00		18.00	143	93	71	48
D7205-CHA-D1750	17.50		18.00	143	93	71	48
D7205-CHA-D1800	18.00		18.00	143	93	71	48
D7205-CHA-D1950	19.50		20.00	153	101	77	50
D7205-CHA-D2000	20.00		20.00	153	101	77	50

推荐切削用量见P65

Recommendation of cutting output see page P65

尺寸范围 Arrange of size	D(k6)	d(h6)
≥2-3	+0.006/+0.000	0.000/-0.006
>3-6	+0.009/+0.001	0.000/-0.008
>6-10	+0.010/+0.001	0.000/-0.009
>10-18	+0.012/+0.001	0.000/-0.011
>18-20	+0.015/+0.002	0.000/-0.013

单位(mm)
Unit(mm)