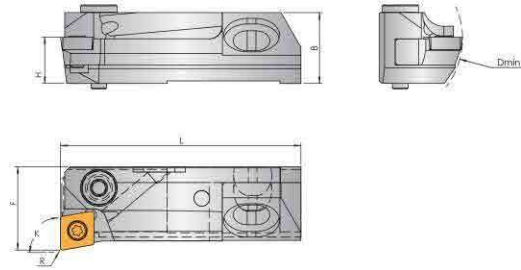


精鏜頭

Fine boring head



型號 Model	Dmin	L	F	B	H	K	R	適合刀片 Inert	適合刀片 Inert		
FSC-8516A0-06-R/L	28	45.8	16	13.5	8.5	90°	0.4	CC 0602	DM2.5x6-T8		
FSC-8516A5-06-R/L										95°	
FST-8516A0-09-R/L								90°	TP 0902	DM2.5x6-T8	
FST-8516A5-09-R/L								95°			
FSD-8516A30-07-R/L	36	47.5	20	13.5	8.5	120°	0.4	DC 0702	DM2.5x6-T8		
FST-8520A0-11C-R/L		45.8				90°		TC 1102			
FST-8520A5-11C-R/L						95°					
FST-8520A0-11P-R/L						90°				TP 1103	DM3x6-T10
FST-8520A5-11P-R/L						95°					

刀片請單獨訂購。

微調精度為直徑中 $\varnothing 0.01\text{mm}$ 。

徑向調整行程 $0-\varnothing 0.6\text{mm}$ ，軸向行程 $0-1.0\text{mm}$ 。

Please order the insert separately.

Fine adjustment accuracy diameter is $\varnothing 0.01\text{mm}$.

Radial range: $0-\varnothing 6\text{mm}$, Axial range: $0-10\text{mm}$.

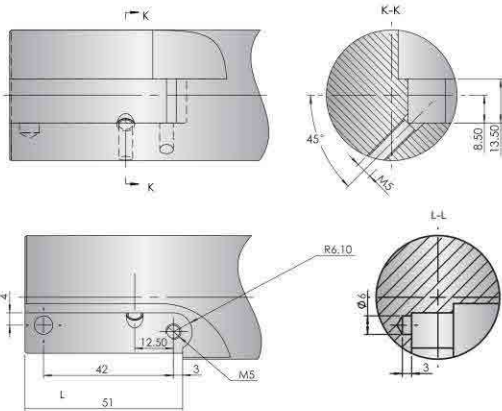
備件 Spare Parts	名稱 Name	型號 Model
	軸向調節塊	SV-12
	軸向調整螺絲	SVM5-20
	刀座固定螺絲	RMM5x20
	刀座固定扳手	PS-4B
	徑向調整扳手	PS-2.5B
	軸向調整扳手	PS-3B

微調刀座說明

Fine tuning tool holder instructions

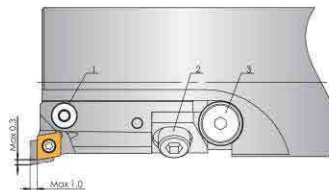
刀座安裝尺寸說明

Cutter holder mounting dimension description



刀座調整說明

Tool holder adjustment instructions



1. 徑向調整螺絲

2. 刀座固定螺絲

3. 軸向調整螺絲

1. Screw for radial adjustment

2. Screw for tool holder fixing

3. Screw for adjust the axis direction

軸向調整操作

稍微鬆開刀座鎖緊螺絲2。順時針旋轉軸向調整螺絲3，刀座向前移動至所需尺寸。擰緊刀座鎖緊螺絲2。

直徑調整操作

順時針方向旋轉徑向調整螺絲1，刀具直徑變大(每格中 $\varnothing 0.01\text{mm}$)

逆時針方向旋轉徑向調整螺絲1，刀具直徑變小(每格 $\varnothing 0.01\text{mm}$)

注意:若刀座需要軸向往後調整，應當鬆開刀座鎖緊螺絲，並將刀座移至最後位置，然後逐漸向前調整至所需尺寸。

Adjust axis direction operation

Slightly loosen the screw 2. Turn clockwise the screw 3. Move the tool holder forward to the required size. Tighten the screw 2.

Adjust diameter operation

Turn the screw 1 clockwise. tool diameter becomes larger ($\varnothing 0.01\text{mm}/\text{grid}$) Turn the screw 1 counterclockwise, tool diameter becomes smaller ($\varnothing 0.01\text{mm}/\text{grid}$) Notice: If the tool holder needs to adjust the axis direction backwards, you should loosen the screw 2, and move the tool holder to the last position, gradually move forward to the desired position.