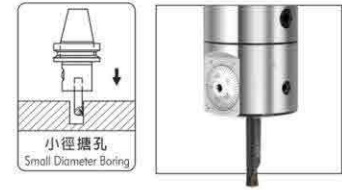
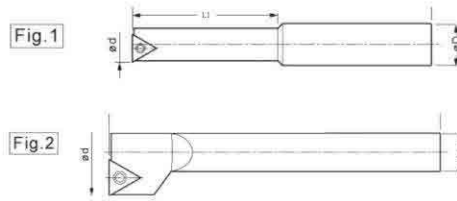


CBI4 專用小徑搪刀杆型BJ型
CBI4 special path boring bar type BJ



型號 Model	模式 Fig.	D	ød	L1	刀片 Insert	螺絲 Screw	板手 Wrench	本體重量(kg) Body weight	单价 RMB
BJ1006-24 BJ1008-32 BJ1010-40	1	10	6-9 8-10 10-12	24 32 40	WB..0601.. TB..0601..	T20040S	T6F	0.020 0.025 0.035	200
BJ1012-45 BJ1016-45 BJ1020-45	2	10	12-16 16-20 20-24	45 45 45	TP..0902..	T25050S	T8F	0.045 0.045 0.045	200

CBI5 專用小徑搪刀杆型BJ型
CBI5 special path boring bar type BJ



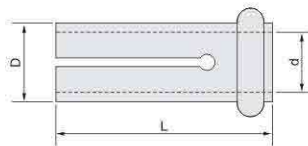
型號 Model	模式 Fig.	D	ød	L1	刀片 Insert	螺絲 Screw	板手 Wrench	本體重量(kg) Body weight	单价 RMB
BJ1206-24 BJ1208-32 BJ1210-40	1	12	6-9 8-10 10-12	24 32 40	WB..0601.. TB..0601..	T20040S	T6F	0.020 0.025 0.035	200
BJ1212-45 BJ1216-45 BJ1220-45	2	12	12-16 16-20 20-24	45 45 45	TP..0902..	T25050S	T8F	0.045 0.045 0.045	200

CBI6 專用小徑搪刀杆型BJ型
CBI6 special path boring bar type BJ

型號 Model	模式 Fig.	D	ød	L	刀片 Insert	螺絲 Screw	板手 Wrench	本體重量(kg) Body weight	单价 RMB
BJ1606-24 BJ1608-32 BJ1610-40	1	16	6-8 8-10 10-12	24 32 40	WB..0601.. TB..0601..	T20040S	T6F	0.070 0.065 0.075	240
BJ1612-53 BJ1616-68 BJ1620-83	2	16	12-16 16-20 20-25	53 68 83	TP..0902..	T25050A	T8F	0.085 0.125 0.170	240
BJ1625-90 BJ1630-90 BJ1640-90			25-30 30-40 40-50	90 90 90	TP..1103..	T30060S	T8F	0.185 0.190 0.205	240

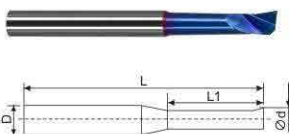
※切削加工時，小徑搪刀杆以3倍直徑伸出量為佳。
※When machining path of boring bar with 3 times the diameter of stickout is preferred.

CBI 系列專用套筒
CBI series special sleeve



型號 Model	尺寸 Size(mm)			单价 RMB
	D	d	L	
CBI 10-4	10	4	35	100
10-5	10	5	35	
10-6	10	6	35	
10-8	10	8	35	100
12-4	12	4	35	
12-5	12	5	35	
12-6	12	6	35	
12-8	12	8	35	
12-10	12	10	35	

CBI 系列專用超小徑碳化鎢搪孔刀 SBJ 型
CBI series special ultra small diameter tungsten carbide boring cutter SBJ



型號 Model	搪孔範圍 Bore range				D	L1	L	重量(kg) weight	鋼用 单价	鋁銅 单价
	最小加工 直徑ød mm	最大加工直徑ød max								
SBJ0401-50	1	3	3	3	4	3	50	0.02	100	90
SBJ0402-50	2	5	5	5	4	7	50	0.02	100	90
SBJ0403-50	3	6	6	6	4	10	50	0.02	100	90
SBJ0404-50	4	7	7	7	4	12	50	0.02	100	90
SBJ0505-50	5	8	8	8	5	15	50	0.02	150	140
SBJ0605-50	5	8	8	8	6	15	50	0.02	150	140
SBJ0606-50	6	9	9	9	6	18	50	0.06	180	170
SBJ0808-60	8	11	11	11	8	24	60	0.06	260	255
SBJ1010-75	10	13	13	13	10	30	75	0.07	360	350