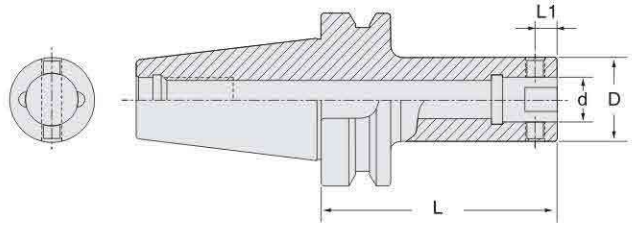


LBK雙面拘束鏜刀柄

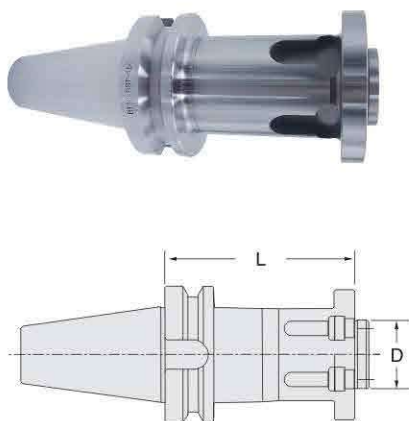
LBKHandle for double-sided boring tool



| 型號 Model | 尺寸 Size(mm) | | | | 側固錐度螺絲 Screw | 單價 RMB |
|----------------|-------------|----|----------------|-----|-----------------|-----------|
| | D | d | L ₁ | L | | |
| BBT30 LBK1-70 | 19 | 11 | 5.05 | 70 | SM4 | - |
| LBK1-105 | 19 | 11 | 5.05 | 105 | | - |
| LBK2-80 | 24 | 14 | 6.62 | 80 | SM5 | - |
| LBK2-115 | 24 | 14 | 6.62 | 115 | | - |
| LBK3-80 | 31 | 18 | 8 | 80 | SM6 | - |
| LBK3-110 | 31 | 18 | 8 | 110 | | - |
| LBK4-70 | 39 | 22 | 10 | 70 | SM8 | - |
| LBK4-115 | 39 | 22 | 10 | 115 | | - |
| LBK5-70 | 50 | 28 | 13 | 70 | SM10 | - |
| LBK5-130 | 50 | 28 | 13 | 130 | | - |
| LBK6-60 | 64 | 36 | 16 | 60 | SM12 | - |
| LBL6-125 | 64 | 36 | 16 | 125 | | - |
| BBT40 LBK1-75 | 19 | 11 | 5.05 | 75 | SM4 | - |
| LBK1-105 | 19 | 11 | 5.05 | 105 | | - |
| LBK1-130 | 19 | 11 | 5.05 | 130 | | - |
| LBK1-165 | 19 | 11 | 5.05 | 165 | | - |
| LBK1-195 | 19 | 11 | 5.05 | 195 | | - |
| BBT40 LBK2-85 | 24 | 14 | 6.62 | 85 | SM5 | - |
| LBK2-115 | 24 | 14 | 6.62 | 115 | | - |
| LBK2-130 | 24 | 14 | 6.62 | 130 | | - |
| LBK2-165 | 24 | 14 | 6.62 | 165 | | - |
| LBK2-200 | 24 | 14 | 6.62 | 200 | | - |
| BBT40 LBK3-95 | 31 | 18 | 8 | 95 | SM6 | - |
| LBK3-125 | 31 | 18 | 8 | 125 | | - |
| LBK3-155 | 31 | 18 | 8 | 155 | | - |
| LBK3-210 | 31 | 18 | 8 | 210 | | - |
| BBT40 LBK4-85 | 39 | 22 | 10 | 85 | SM8 | - |
| LBK4-115 | 39 | 22 | 10 | 115 | | - |
| LBK4-150 | 39 | 22 | 10 | 150 | | - |
| LBK4-175 | 39 | 22 | 10 | 175 | | - |
| LBK4-220 | 39 | 22 | 10 | 220 | | - |
| BBT40 LBK5-75 | 50 | 28 | 13 | 75 | SM10 | - |
| LBK5-125 | 50 | 28 | 13 | 125 | | - |
| LBK5-175 | 50 | 28 | 13 | 175 | | - |
| LBK5-235 | 50 | 28 | 13 | 235 | | - |
| BBT40 LBK6-65 | 64 | 36 | 16 | 65 | SM12 | - |
| LBK6-115 | 64 | 36 | 16 | 115 | | - |
| LBK6-165 | 64 | 36 | 16 | 165 | | - |
| LBK6-200 | 64 | 36 | 16 | 200 | | - |
| LBK6-240 | 64 | 36 | 16 | 240 | | - |
| BBT50 LBK1-115 | 19 | 11 | 5.05 | 115 | SM4 | - |
| LBK1-145 | 19 | 11 | 5.05 | 145 | | - |
| LBK1-175 | 19 | 11 | 5.05 | 175 | | - |
| LBK1-200 | 19 | 11 | 5.05 | 200 | | - |
| BBT50 LBK2-110 | 24 | 14 | 6.62 | 110 | SM5 | - |
| LBK2-140 | 24 | 14 | 6.62 | 140 | | - |
| LBK2-175 | 24 | 14 | 6.62 | 175 | | - |
| LBK2-235 | 24 | 14 | 6.62 | 235 | | - |

| 型號 Model | 尺寸 Size(mm) | | | | 側固錐度螺絲 Screw | 單價 RMB |
|----------------|-------------|----|----------------|-----|-----------------|-----------|
| | D | d | L ₁ | L | | |
| BBT50 LBK3-125 | 31 | 18 | 8 | 125 | SM6 | - |
| | 31 | 18 | 8 | 155 | | - |
| | 31 | 18 | 8 | 185 | | - |
| | 31 | 18 | 8 | 215 | | - |
| | 31 | 18 | 8 | 255 | | - |
| | 31 | 18 | 8 | 290 | | - |
| BBT50 LBK3-350 | 31 | 18 | 8 | 350 | SM8 | - |
| | 39 | 22 | 10 | 115 | | - |
| | 39 | 22 | 10 | 145 | | - |
| | 39 | 22 | 10 | 175 | | - |
| | 39 | 22 | 10 | 205 | | - |
| | 39 | 22 | 10 | 255 | | - |
| BBT50 LBK4-305 | 39 | 22 | 10 | 305 | SM10 | - |
| | 39 | 22 | 10 | 355 | | - |
| | 50 | 28 | 13 | 105 | | - |
| | 50 | 28 | 13 | 180 | | - |
| | 50 | 28 | 13 | 240 | | - |
| | 50 | 28 | 13 | 300 | | - |
| BBT50 LBK5-350 | 50 | 28 | 13 | 350 | SM12 | - |
| | 64 | 36 | 16 | 95 | | - |
| | 64 | 36 | 16 | 140 | | - |
| | 64 | 36 | 16 | 170 | | - |
| | 64 | 36 | 16 | 230 | | - |
| | 64 | 36 | 16 | 290 | | - |
| BBT50 LBK6-600 | 64 | 36 | 16 | 350 | SM12 | - |
| | 64 | 36 | 16 | 400 | | - |
| | 64 | 36 | 16 | 450 | | - |
| | 64 | 36 | 16 | 500 | | - |
| | 64 | 36 | 16 | 550 | | - |
| | 64 | 36 | 16 | 600 | | - |
| | 64 | 36 | 16 | 650 | | - |
| | 64 | 36 | 16 | 700 | | - |

BST雙面拘束鏜刀柄
BST Handle for double-sided boring tool



| 型號 Model | 尺寸 Size(mm) | | 單價 RMB |
|---------------|-------------|-----|-----------|
| | D | L | |
| BBT40-BST-70 | 50 | 70 | - |
| BBT40-BST-100 | | 100 | - |
| BBT40-BST-150 | | 150 | - |
| BBT40-BST-200 | | 200 | - |
| BBT50-BST-100 | | 100 | - |
| BBT50-BST-150 | | 150 | - |
| BBT50-BST-200 | | 200 | - |
| BBT50-BST-250 | | 250 | - |
| BBT50-BST-300 | | 300 | - |
| BBT50-BST-350 | | 350 | - |
| BBT50-BST-400 | | 400 | - |
| BBT50-BST-450 | | 450 | - |
| BBT50-BST-500 | | 500 | - |

BST粗精鏜孔刀頭基礎柄系列(鏜孔範圍 > Φ200)
BST Basic holder for roughness and precision boring bar (Boring range > Φ 200)