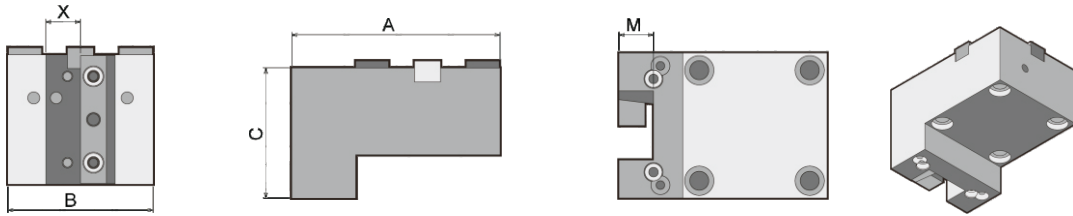


BMT 外径刀座

BMT TURNING HOLDER

-For DOOSAN
-External coolant supply(外出水)

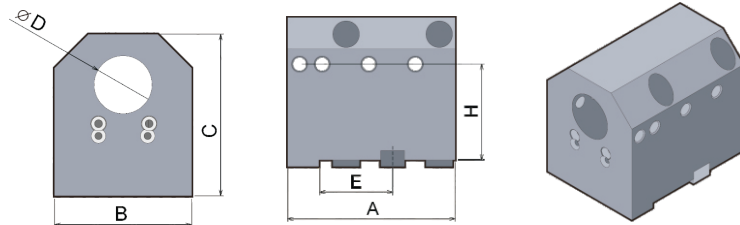


size unit mm

| Model | A | B | C | X | M | N.W.Kg | |
|------------------------------|-----|----|----|----------|----------|------------|--|
| BMT45-C20x60 | 105 | 75 | 60 | 20 | 20 | 2.7 | |
| BMT55-C20x70 BMT55-C25x70 | 120 | 84 | 70 | 20 25 | 20 25 | 4.1 3.8 | |
| BMT65-C25x75 | 131 | 96 | 75 | 25 | 25 | 5.7 | |

BMT 内孔刀座

BMT BORING BAR HOLDER

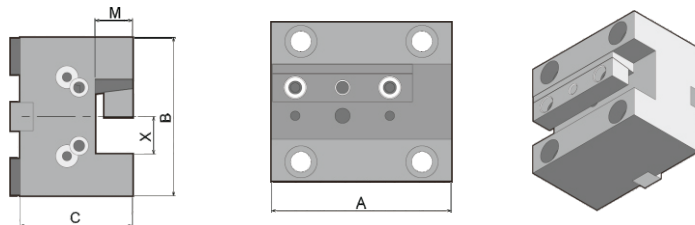


size unit mm

| Model | A | B | C | D | E | H | N.W.Kg |
|------------------------------|-----|----|-----|----------|------|----|------------|
| BMT45-B25x65 BMT45-B32x65 | 95 | 75 | 85 | 25 32 | | 65 | 4.2 4.5 |
| BMT55-B32x60 BMT55-B40x60 | 105 | 86 | 90 | 32 40 | 50.5 | 60 | 4.5 4.8 |
| BMT65-B32x72 BMT65-B40x72 | 126 | 95 | 112 | 32 40 | 55 | 72 | 7.6 7.9 |

BMT 端面刀座

BMT END CUTTER HOLDER



size unit mm

| Model | A | B | C | X | M | | |
|--------------|-----|----|----|----|----|--|--|
| BMT45-F20x60 | 85 | 75 | 60 | 20 | 20 | | |
| BMT55-F25x95 | 105 | 90 | 95 | 25 | 25 | | |
| BMT65-F25x95 | 115 | 95 | 95 | 25 | 25 | | |