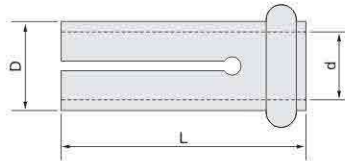


### SBJ/NBH2084鎢鋼刀杆專用套筒

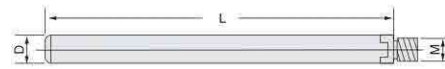
SBJ/NBH2084 Collet For Supre Head Solid Caibide Boring Bar



| 型號<br>Model          | 尺寸 Size(mm) |    |    | 单价<br>RMB |
|----------------------|-------------|----|----|-----------|
|                      | D           | d  | L  |           |
| <i>New!</i> SBJ 16-3 | 16          | 4  | 37 | 70        |
| 16-4                 | 16          | 4  | 37 | 70        |
| <i>New!</i> 16-5     | 16          | 5  | 37 | 70        |
| 16-6                 | 16          | 6  | 37 | 70        |
| 16-7                 | 16          | 8  | 37 | 70        |
| 16-8                 | 16          | 8  | 37 | 70        |
| 16-10                | 16          | 10 | 37 | 70        |
| 16-12                | 16          | 12 | 37 | 70        |
| 16-14                | 16          | 14 | 37 | 70        |
| NBH2084-6            | 20          | 6  | 37 | 100       |
| 2084-8               | 20          | 8  | 37 | 100       |
| 2084-10              | 20          | 10 | 37 | 100       |
| 2084-12              | 20          | 12 | 37 | 100       |
| 2084-14              | 20          | 14 | 37 | 100       |
| 2084-16              | 20          | 16 | 37 | 100       |

### TL抗震鎢鋼刀杆

TL Anti-shank Solid Carbide Boring Bar

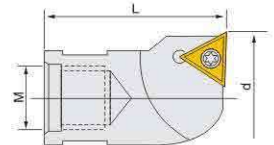


| 型號<br>Model            | 尺寸 Size(mm) |     |     | 鏜孔範圍<br>Boring Range | 組合鏜頭<br>Modular Boring | 单价<br>RMB |
|------------------------|-------------|-----|-----|----------------------|------------------------|-----------|
|                        | D           | L   | M   |                      |                        |           |
| TL 08-M5-100           | 8           | 100 | M5  | 9-13                 | BE09                   | 360       |
| 08-M5-150              | 8           | 150 | M5  | 9-13                 | BE09                   | 450       |
| 10-M6-120              | 10          | 120 | M6  | 12-15                | BE12                   | 360       |
| 10-M6-160              | 10          | 160 | M6  | 12-15                | BE12                   | 416       |
| 12-M6-120              | 12          | 120 | M6  | 14-17                | BE14                   | 416       |
| 12-M6-160              | 12          | 160 | M6  | 14-17                | BE14                   | 520       |
| <i>New!</i> 14-M6-100  | 14          | 160 | M6  | 16-20                | BE16                   | 650       |
| 14-M6-160              | 14          | 160 | M6  | 16-20                | BE16                   | 650       |
| 14-M6-200              | 14          | 200 | M6  | 16-20                | BE16                   | 900       |
| <i>New!</i> 16-M10-100 | 14          | 160 | M10 | 18-42                | BE18-BE52              | 800       |
| 16-M10-160             | 16          | 160 | M10 | 18-42                | BE18-BE52              | 800       |
| 16-M10-200             | 16          | 200 | M10 | 18-42                | BE18-BE52              | 950       |

鏜孔深度不得超過孔徑六倍 The boring depth should be no more than 6 times of the hole.

### BE捨棄式鏜頭

BE Throw-away Boring Head



| 型號<br>Model | 尺寸 Size(mm) |    |     | 鏜孔範圍<br>Boring Range | 刀片型號<br>Insert | 螺絲<br>Screw | 扳手<br>Wrench | 单价<br>RMB |
|-------------|-------------|----|-----|----------------------|----------------|-------------|--------------|-----------|
|             | d           | L  | M   |                      |                |             |              |           |
| BE 09       | 09          | 18 | M5  | 9-10.5               | TP**0802       | T22050S     | T8F          | 100       |
| 10.5        | 10.5        | 18 | M5  | 10.5-12              |                |             |              | 100       |
| 12          | 12          | 23 | M6  | 12-14                |                |             |              | 100       |
| 14          | 14          | 23 | M6  | 14-16                |                |             |              | 100       |
| 16          | 16          | 23 | M6  | 16-18                |                |             |              | 100       |
| 18          | 18          | 27 | M10 | 18-20                |                |             |              | 100       |
| 20          | 20          | 27 | M10 | 20-22                |                |             |              | 100       |
| 22          | 22          | 27 | M10 | 22-24                |                |             |              | 100       |
| 24          | 24          | 27 | M10 | 24-26                |                |             |              | 100       |
| 26          | 26          | 27 | M10 | 26-28                |                |             |              | 100       |
| 28          | 28          | 27 | M10 | 28-30                |                |             |              | 100       |
| 30          | 30          | 27 | M10 | 30-32                |                |             |              | 140       |
| 32          | 32          | 27 | M10 | 32-34                |                |             |              | 140       |
| 34          | 34          | 27 | M10 | 34-36                |                |             |              | 140       |
| 36          | 36          | 27 | M10 | 36-38                |                |             |              | 200       |
| 38          | 38          | 27 | M10 | 38-40                |                |             |              | 200       |
| 40          | 40          | 27 | M10 | 40-42                |                |             |              | 200       |
| 42          | 42          | 27 | M10 | 42-44                |                |             |              | 300       |
| 44          | 44          | 27 | M10 | 44-46                |                |             |              | 300       |
| 46          | 46          | 27 | M10 | 46-48                |                |             |              | 400       |
| 48          | 48          | 27 | M10 | 48-50                |                |             |              | 400       |
| 50          | 50          | 27 | M10 | 50-52                |                |             |              | 400       |

注：以上三種配件可配鏜頭CBI4、CBI5、CBI6、SBJ16、NBH2084使用。