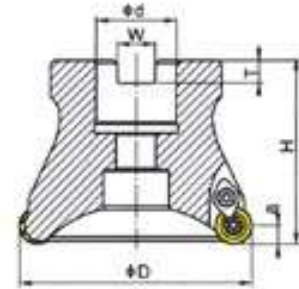


EMRW圆鼻面铣刀盘 EMRW Round dowel face mill



- 使用11° 正角刀片
- 刀片经济, 适用性高
- 容屑空间大, 排屑好
- 锥形设计, 钢性高

- ★ Using the 11° positive angle blade
- ★ Blade economy, the applicability of high
- ★ Capacity chip a large space, good chip disposal
- ★ Cone design, steel high



型号 Cat. No	尺寸 Size					
	D	d	H	W	T	a
EMRW-6R-50-22-4T	50	22	50	10.4	6.3	6
EMRW-6R-63-22-4T	63	22	50	10.4	6.3	6
EMRW-6R-80-27-6T	80	27	50	12.4	7	6
EMRW-6R-100-32-6T	100	32	50	14.4	8	6
EMRW-6R-125-40-7T	125	40	63	16.4	9	6
EMRW-6R-160-40-8T	160	40	63	16.4	9	6
EMRW-6R-200-60-9T	200	60	63	25.7	14	6
EMRW-6R-63-25.4-4T	63	25.4	50	10	6	6
EMRW-6R-80-25.4-6T	80	25.4	50	10	6	6
EMRW-6R-100-31.75-6T	100	31.75	50	13	8	6

配件 Mating

型号 Cat. No	刀片 Insert	压板 Clamp piece	螺钉 Clamp screw	扳手 wrench
EMRW-6R	RPMW \ T 1204 MO	Y-6R	M4 × 10	T15

适用刀片 Insert

型号 Cat. No	F7030	F620	VP15TF	NX4545	UT120T	TN100M	PR510	PR660	PR730	KW10	P201	刀片形状 Insert shape	尺寸 (mm) Size			
													D1	S1	排屑槽	
RPMT1204MOE-JS	●	●	●										12	4.76	有	MITSUBISHI (三菱)
RPMT1204MO							●	●	●	●			12	4.76	有	KYOCERA (京瓷)
RPMT1204MO											●		12	4.76	有	ROSS
RPMV1204MOE 1204MOT	●	●	●	●	●								12	4.76	无	MITSUBISHI (三菱)
													12	4.76	无	