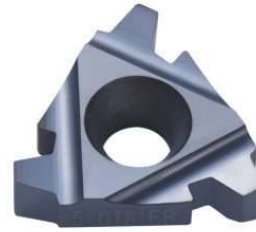
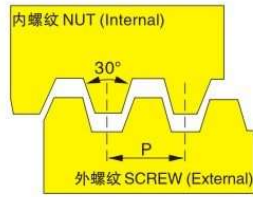
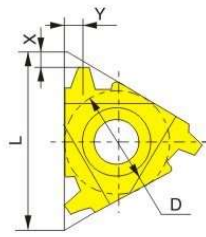


# 1-5.2 30° 标准梯形螺纹刀片

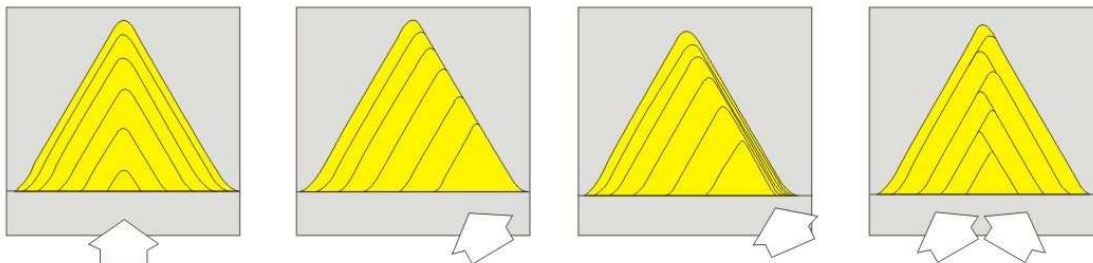
## (30° Standard Trapezoidal Threading Insert)



	D	加工螺距Pitch	刀片型号Designation		刀片尺寸Dimension		
		mm	右旋螺纹 Right hand	左旋螺纹 Left hand	L	X	Y
外螺纹 External	3/8"	1.5	16ER1.5 TR	16EL1.5 TR	16	1.0	1.1
		2.0	16ER2 TR	16EL2 TR		1.1	1.3
		3.0	16ER3 TR	16EL3 TR		1.3	1.5
	1/2"	4.0	22ER4 TR	22EL4 TR	22	1.7	1.9
		5.0	22ER5 TR	22EL5 TR		2.1	2.5
	5/8"	6.0	27ER6 TR	27EL6 TR	27	2.2	2.6
7.0		27ER7 TR	27EL7 TR	2.3		2.7	
内螺纹 Internal	3/8"	1.5	16IR1.5 TR	16IL1.5 TR	16	1.0	1.1
		2.0	16IR2 TR	16IL2 TR		1.1	1.3
		3.0	16IR3 TR	16IL3 TR		1.3	1.5
	1/2"	4.0	22IR4 TR	22IL4 TR	22	1.7	1.9
		5.0	22IR5 TR	22IL5 TR		2.1	2.5
	5/8"	6.0	27IR6 TR	27IL6 TR	27	2.2	2.6
7.0		27IR7 TR	27IL7 TR	2.3		2.7	

● 订货举例: 16ER 1.5TR 100片  
 ● Order example: 16ER 1.5TR 100PCS

### 螺纹切削进刀方式 Thread cutting feed way



垂直车螺纹方式 (径向进给) Vertical thread turning way (radial feed)	单边刃车螺纹 (侧向进给) Unilateral blade thread turning (lateral feed)	单边刃修正车螺纹 (侧向进给) Unilateral blade thread turning correction (lateral feed)	交叉车螺纹 (交替侧向进给) Staggered thread turning (alternate lateral feed)
---	---	--	---